

ONE SIZE DOESN'T FIT ALL

Danish Sound Cluster • 23 march 2023 • LAIKA Rumdesign©

LAIKA

Rumdesign

+30 Consultants

Examples

Clients, projects and workplace design:

- LEGO System A/S 2000+ pers.
- Novo Nordisk, 8000+ pers.
- Schneider Electric, Nordics/Baltics
- Chr. Hansen Innovation Campus
- FLSmidth, nyt HQ, 500+ pers.
- Kahoot, Cph. & Barcelona
- Nordea, international design guide
- Administrationsstyrelsen
- Rudersdal Kommunes rådhus
- Unicef, Danish HQ, 70 pers



Open-plan offices

How to create a
high performing
workplace design

- What we talk about when we talk about open-plan offices
- Myths and claims
- Designing for various needs in the open-plan office
- One size doesn't fit all

What are we talking about...

Open-plan offices



A lot of research and articles refers to offices and work conditions, that doesn't nearly compare to a danish standards

The activity based offices



Open-plan offices design with a mix of facilities for both
focus and collaboration



Are open-plan offices..

Space optimisation?

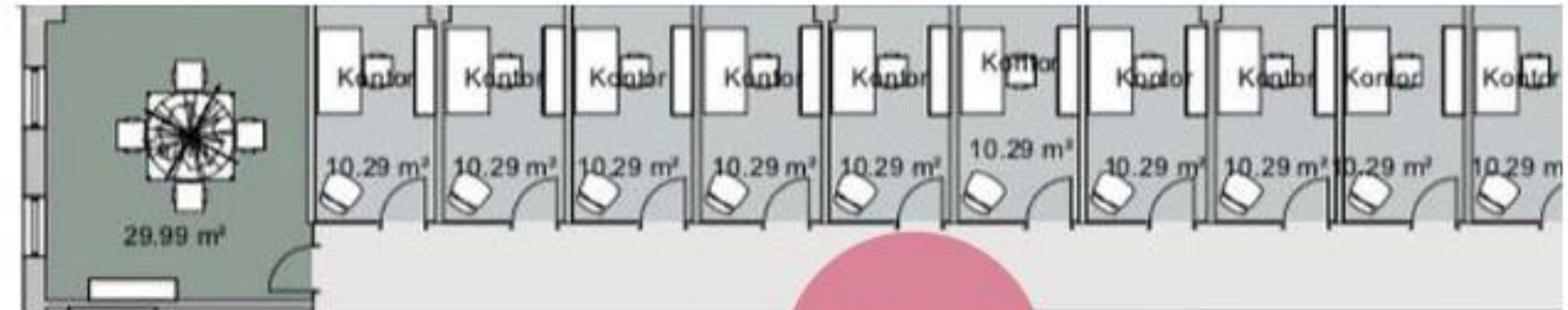
Better or worse for collaboration?

Noisy and less efficient?

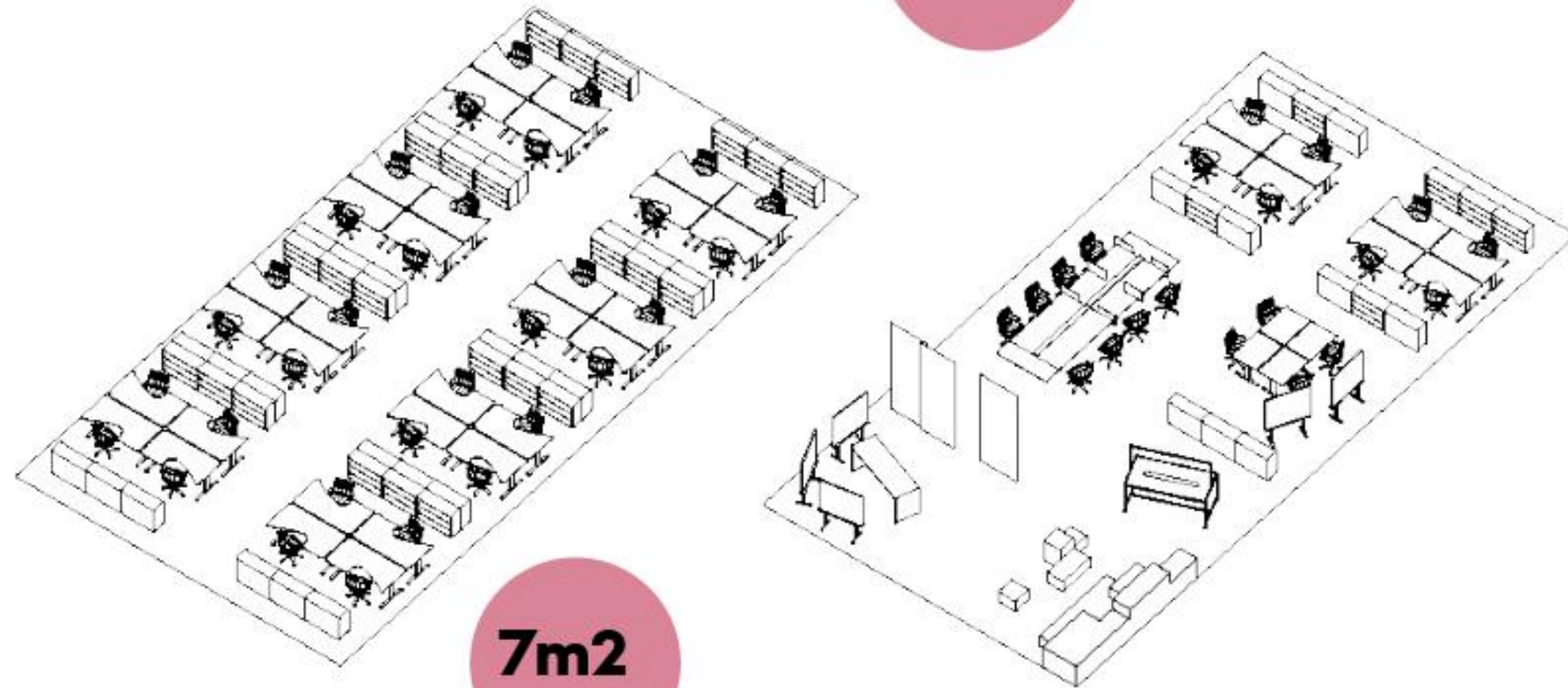
Space optimisation?

Yes, it is optimisation..

But to ensure space for both collaboration and focus, the difference is actually not so big



10m²

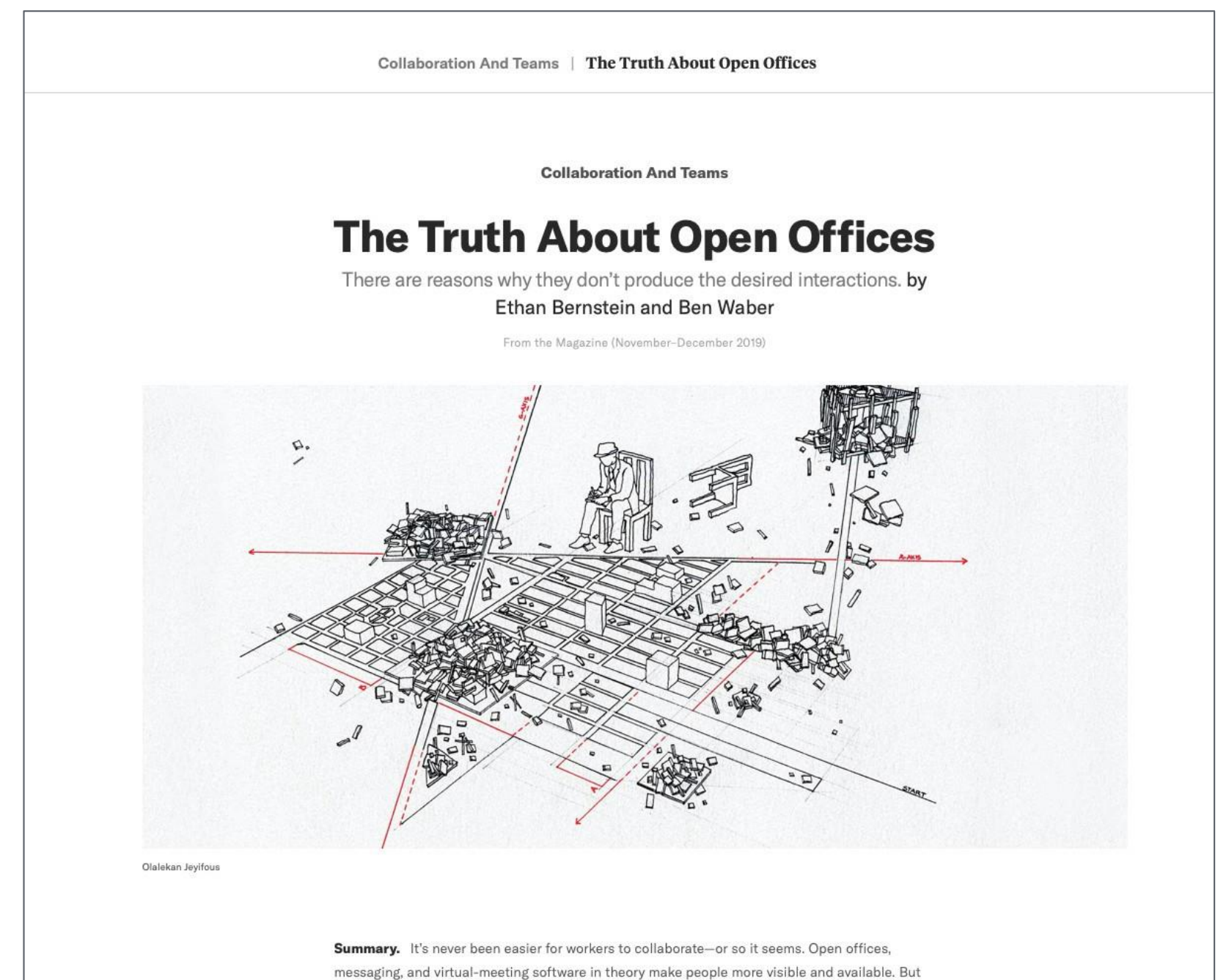


7m²

Better or worse for collaboration and knowledge sharing?

- Badly design open-plan offices can result in less interaction
- Individual offices can result in less interaction

Collaboration and knowledge sharing requires a mix of facilities



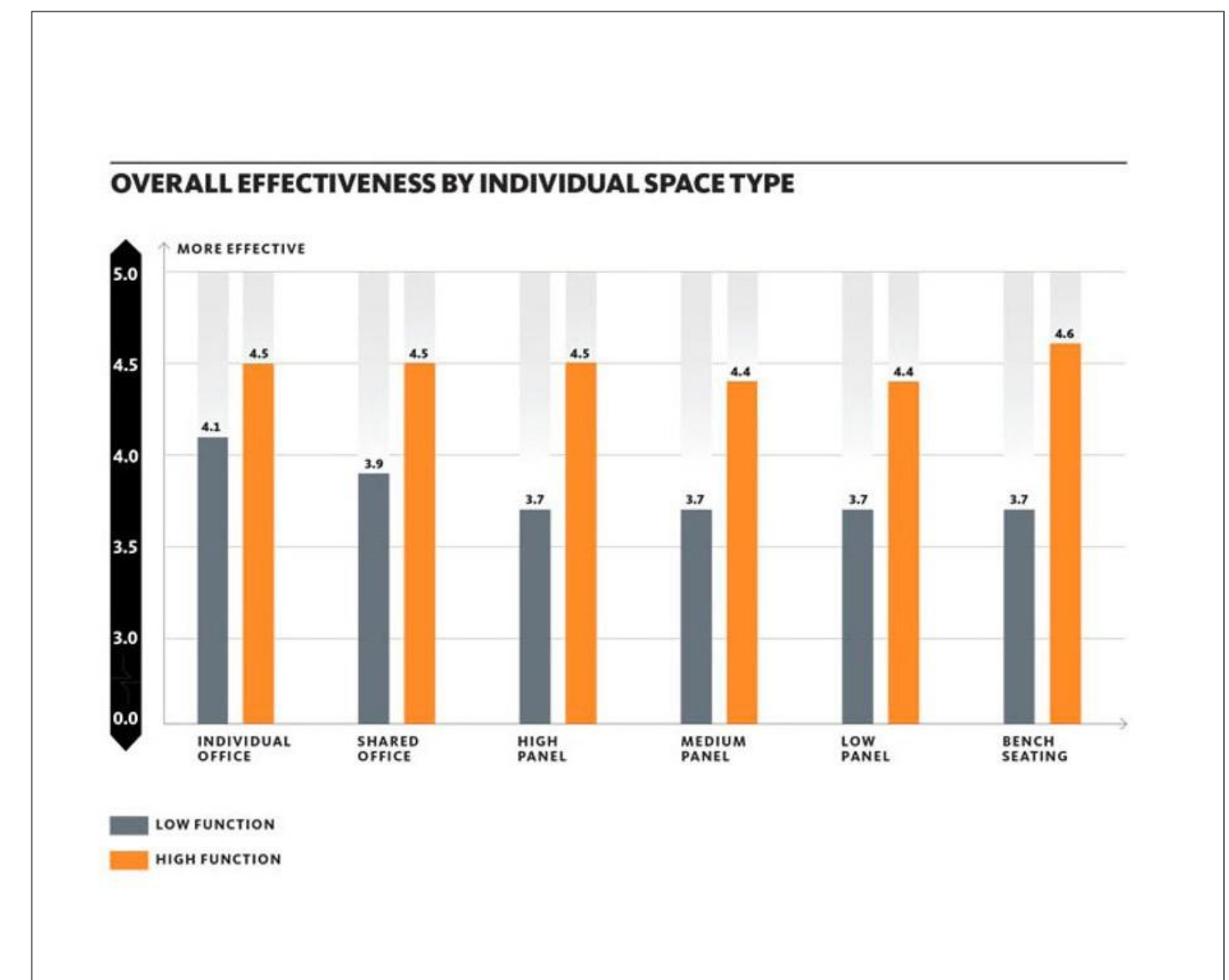
Noisy and less efficient?

Too noisy and too quiet - **noise management is crucial in open offices**

Disturbances – **focus management is required in the modern world!**

The best performing offices:

- Designed to match the needs of the users
- Mix of facilities
- Choice and control
- Easy access to people and resources



(Gensler, US Workplace Survey)

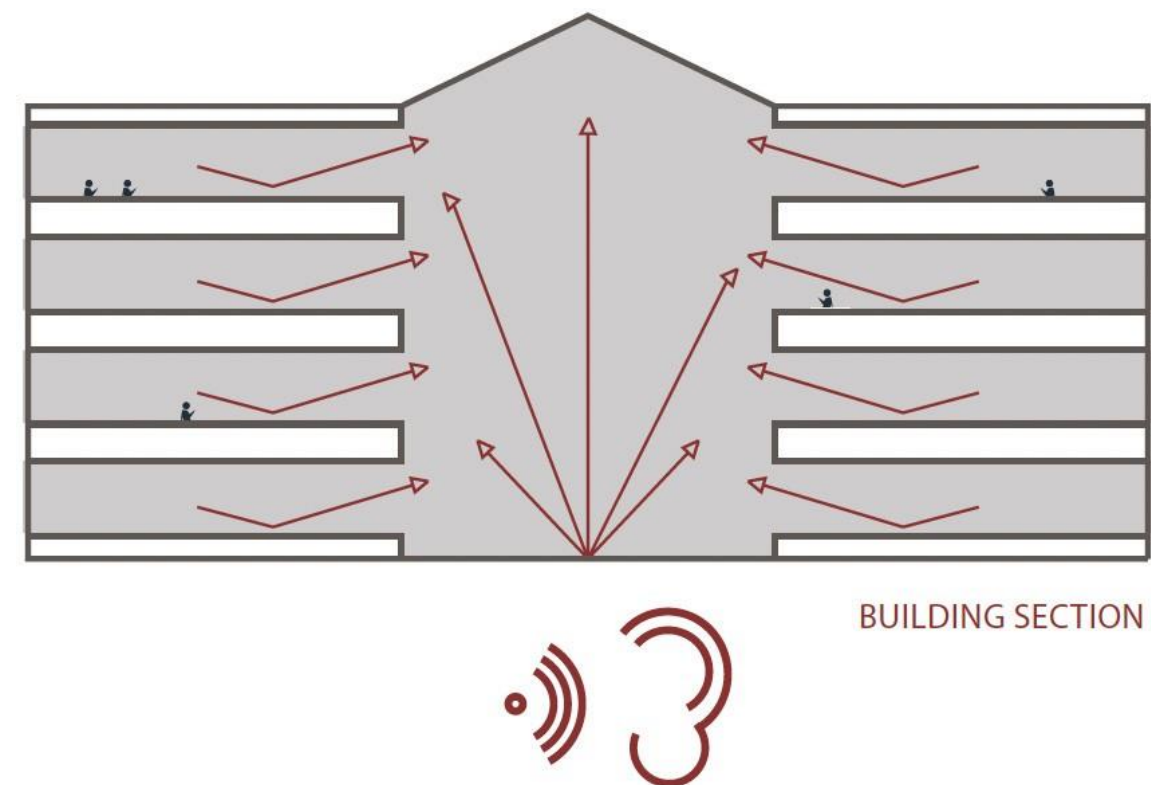
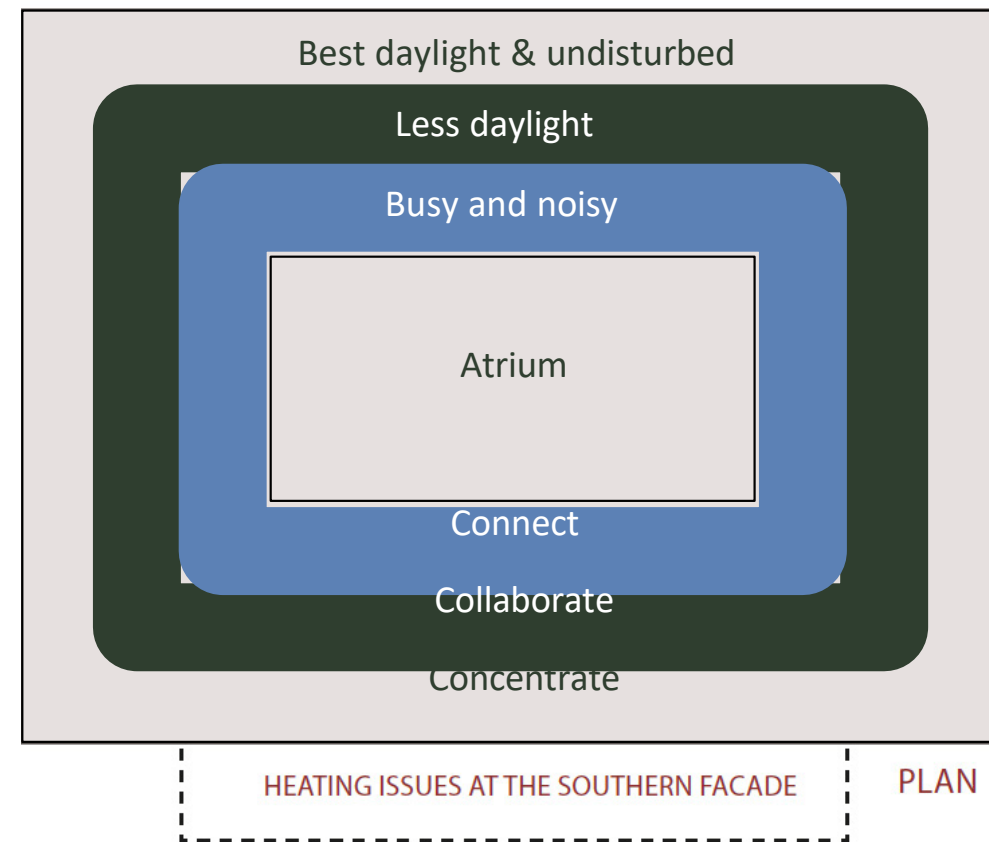
Designing for various needs in...

Open-plan offices

Designed to match the needs...



Zoning



connect





collaborate

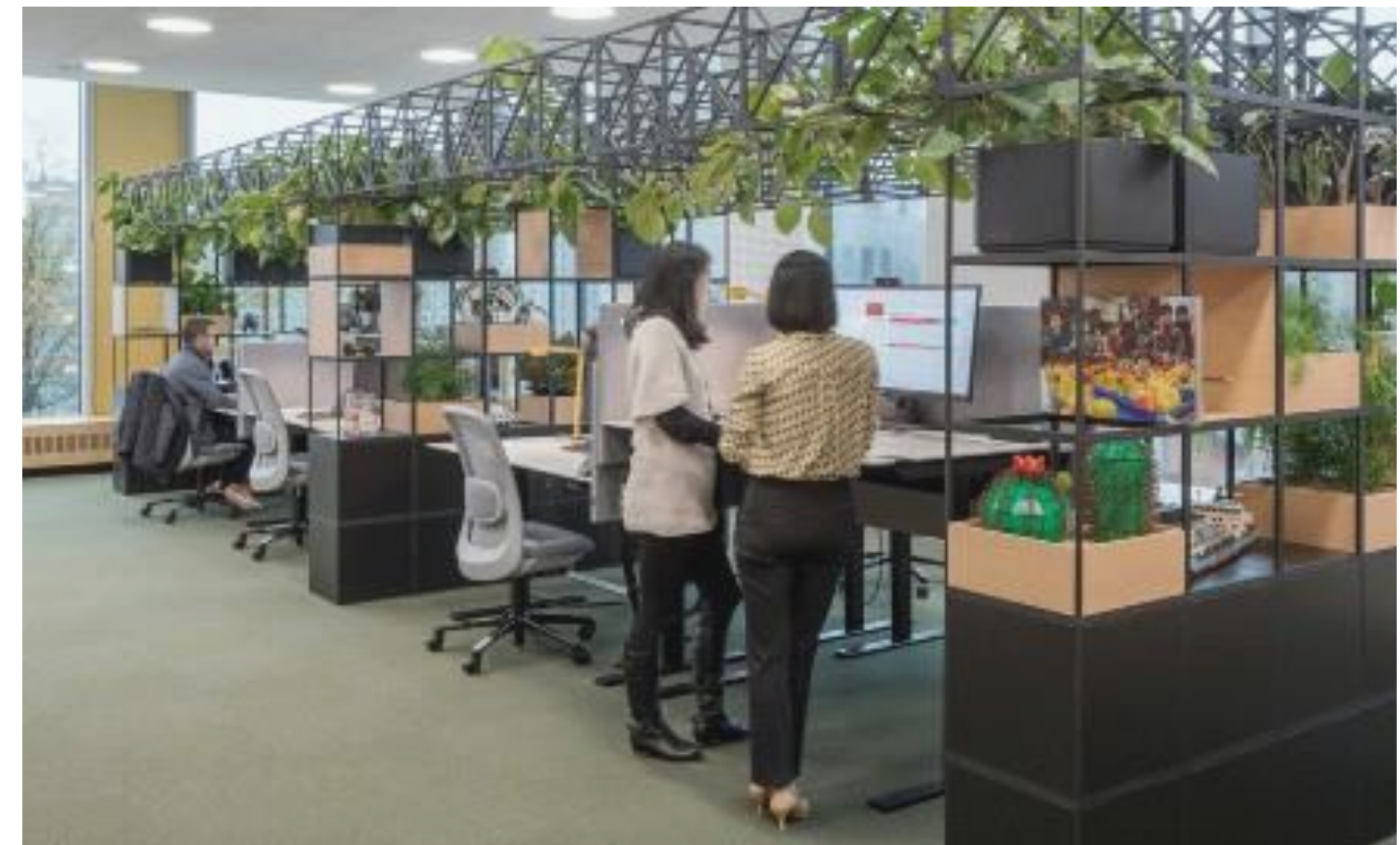
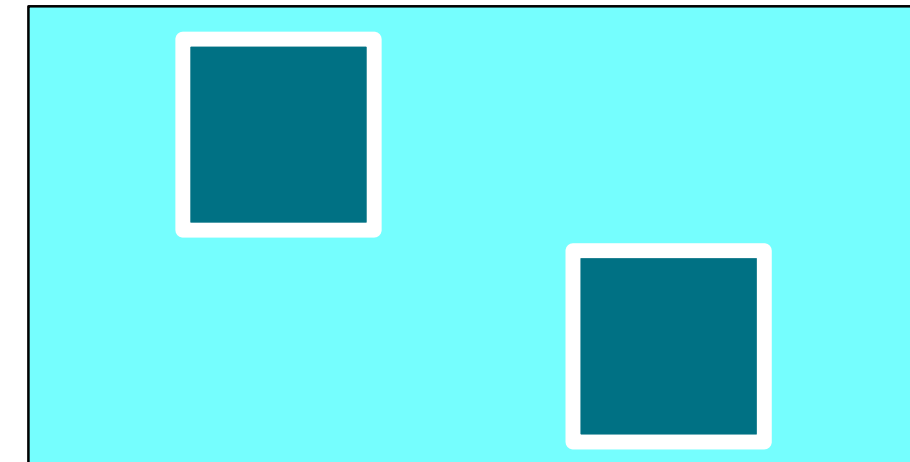
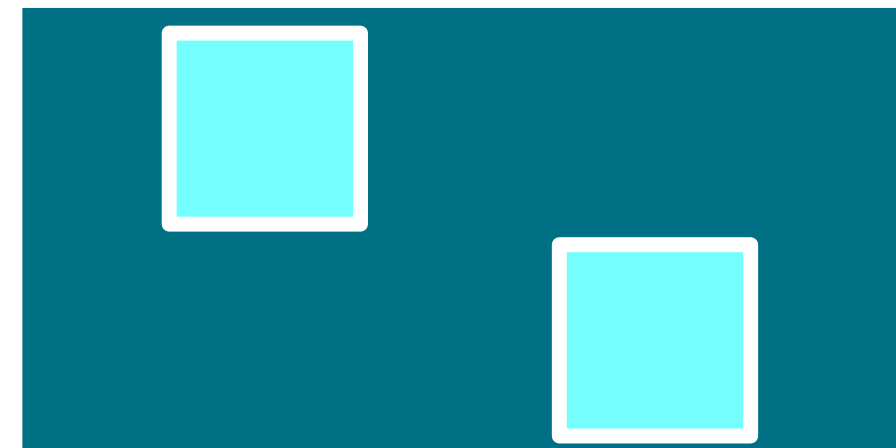


concentrate

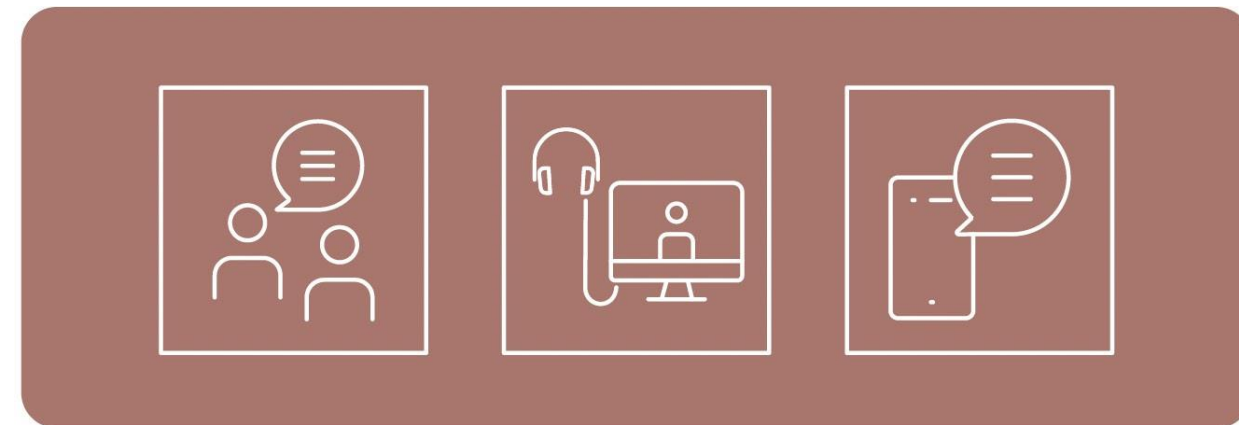
What is our preferred workstyle?

'War room' vs. 'war floor'

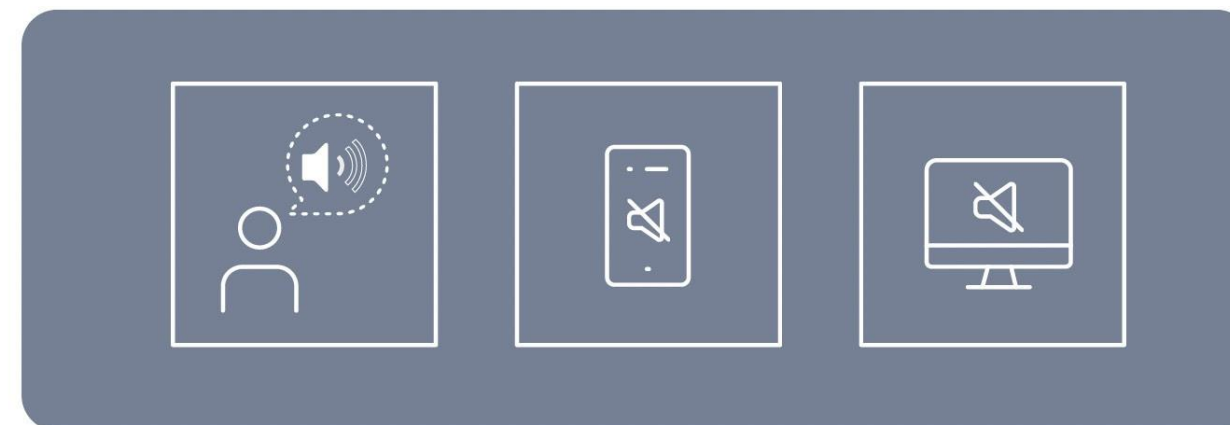
Dynamic/'noise' 
Concentration 



Agree on code of conduct and communicate



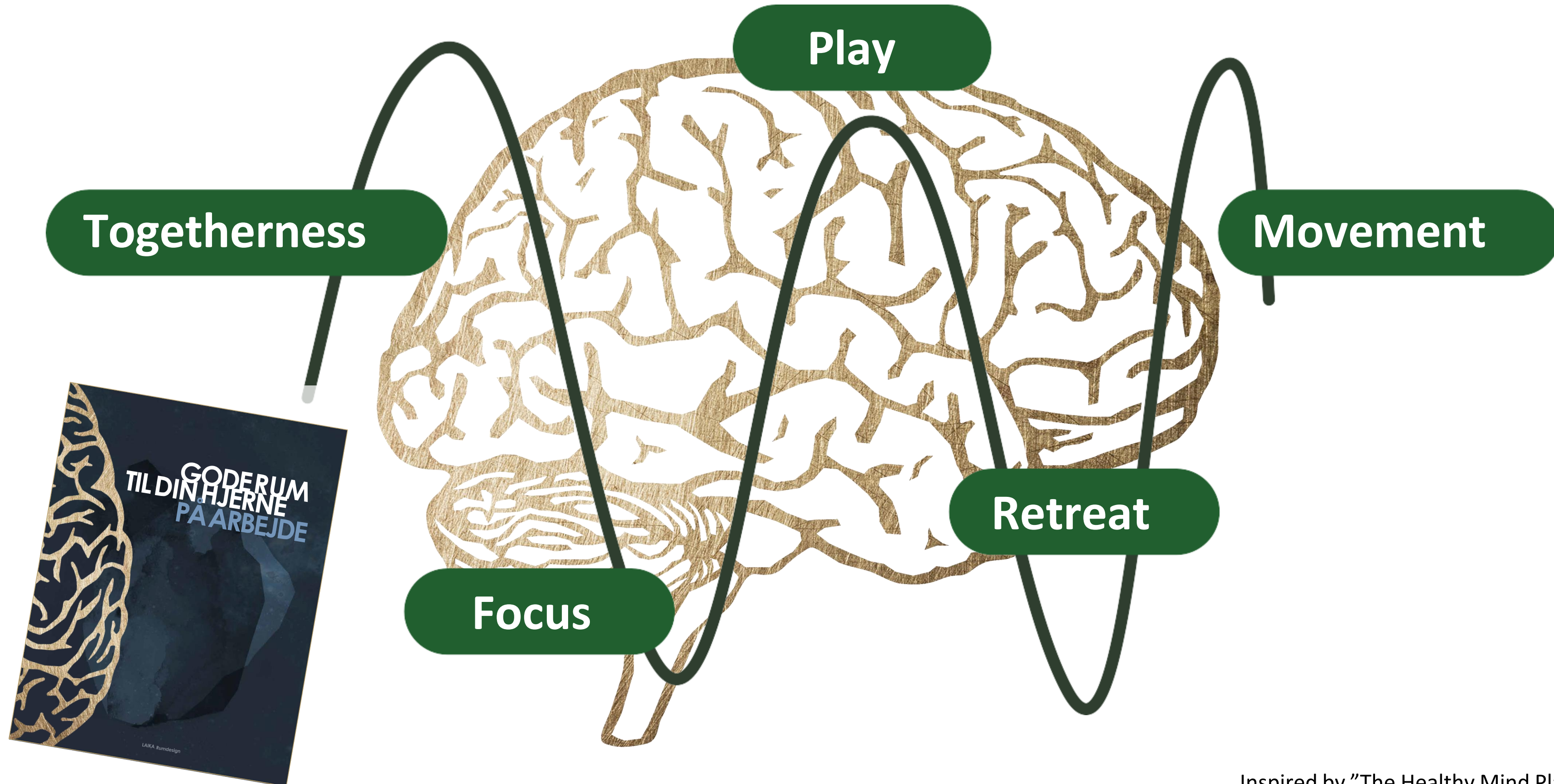
COLLABORATION
ZONE



FOCUS ZONE

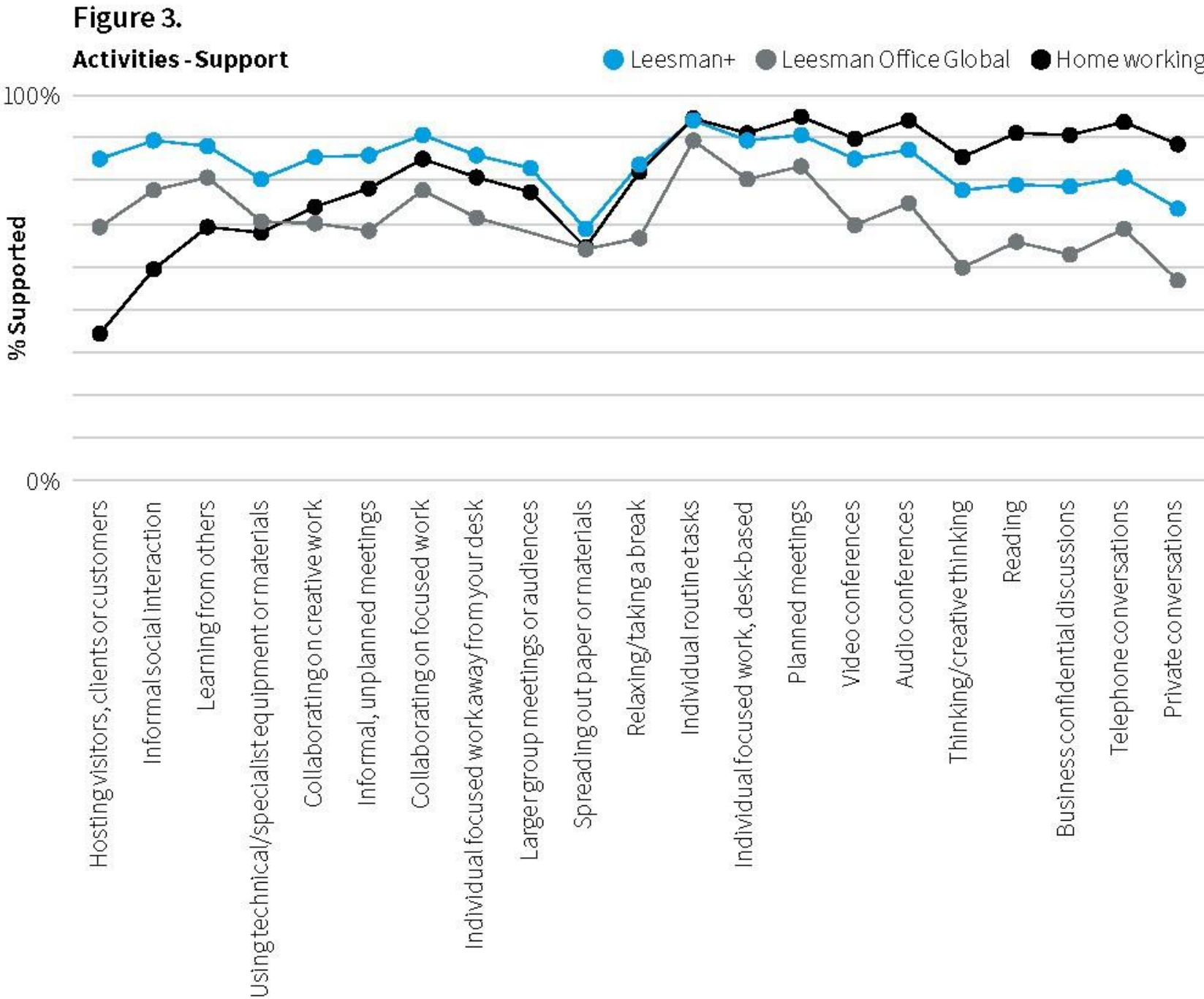
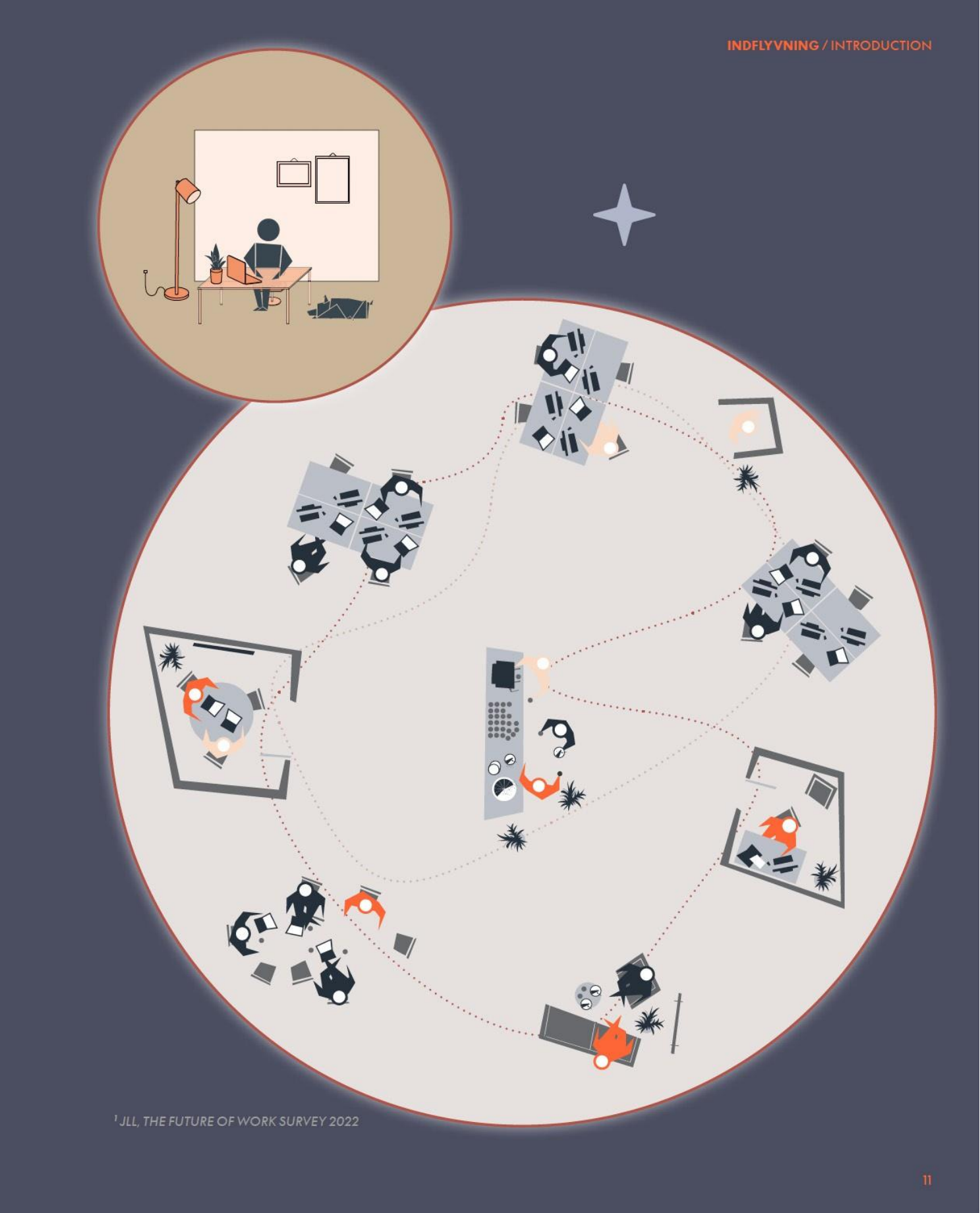


Brain friendly space planning



Inspired by "The Healthy Mind Platter" created by Dr. Daniel J. Siegel and Dr. David Rock.

The Hybrid Worklife



Leesman Office Global N=817,598, Leesman Home working N=160,579, Leesman+ N=52,442, Data as at Q4/2020

www.leesmanindex.com

Make it worth the commute!

Meeting
center



Sustainability/
Nature



Collaboration Employee experience



Branding - Art?



Part of
something
bigger



- Open-plan offices requires a mix of facilities and zones
- Provide choice and control
- Brain friendly planning
- Involve the users
- One size doesn't fit all

Space Matters!

